

OVERVIEW

 **POWERDRAIN**
Packaged Pump Stations

by Pedrollo Distribution



Remove Waste Water



Ease of Installation



Compact Design



Quiet & Reliable



High Level Alarm Option



Single & Twin Pump Systems

Ground Water | Rain Water | Grey Water | Sewage/Foul Water

› **Need to remove wastewater?**

There may be situations where there is a need to remove rain, ground, or wastewater and it is not possible to gravity feed into a drainage system. A packaged pump station provides the perfect solution by collecting the water and efficiently pumping it to the sewage drain. These systems are commonly used in basements, property extensions, and areas with limited drainage access, ensuring reliable wastewater management.

› **What pump type do I need?**

The type of pump you need will depend on the type of water you are trying to remove. We offer pump stations with Pedrollo Top 2 pumps which are designed for removing clean or rainwater. For waste or sewage water we offer systems with Pedrollo VX pumps capable of handling 50mm soft solids. The larger systems are also available with grinder pumps.

› **Is it easy to install?**

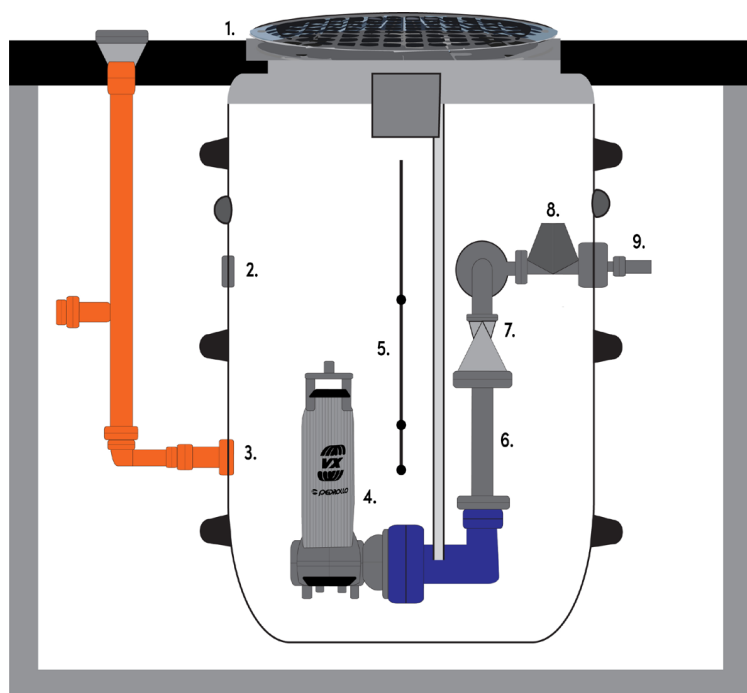
Our packaged pump stations are designed to remove the headache for installers. See our Installation Guideline for step by step instructions.

› **Do I need a twin pump system?**

If a single pump system does not meet the performance you require and there is a need for a more robust system with a backup, then we offer twin pump systems which can remove wastewater at a higher flow rate compared to a single pump system. Twin pump systems are most commonly set up so the second pump will start when there is a higher than normal intake to the system or to provide a backup should the first pump fail.

› **What size systems do I need?**

In applications involving the storage and pumping of sewage water for a whole property the tank should be sized to contain 24 hour inflow to allow for disruption in service. For domestic use the minimum daily inflow should be calculated at 150 litres per person per day.



1. Pedestrian covers as standard
2. Cable duct - (To be drilled on site)
3. 110mm o/d inlet c/w seal (To be drilled on site)
4. Submersible pump
5. Level control floats / transducer
6. Pipework up to 80mm
7. Non-return valve
8. Gate valve on bigger models
9. Outlet connection

POWERDRAIN **BASEMENT PUMP STATIONS**

Our Basement Packaged Pumping Stations are constructed from high-quality polyethylene, ensuring exceptional strength and durability. These pumping stations are specifically designed to handle the removal of groundwater or sewage water, providing a reliable and efficient solution for properties where drainage is a concern or areas where traditional gravity drainage may not be possible. They are well-suited for installation in basements, extensions, annexes, and garden offices.

KEY FEATURES

- Available with single or twin pumps
- Strong polyethylene chamber
- Designed for easy installation
- Solids handling pump options
- All stations are available from stock

OPTIONAL EXTRAS

- Basic alarm package
- Premium alarm package
- 2 pump control panel package

RANGE OPTIONS



140L

Mini Basement

Capacity: **140L**
 Dimensions: **h: 625mm**
w: 510mm ø
 Pumps: **Drainage or Sewage.**
Single Pump
 Discharge Connection:
Drainage - 1.5" BSP male with
adaptor to 40mm solvent weld
pipe
Sewage - 50mm MDPE



240L

Basement

Capacity: **240L**
 Dimensions: **h: 950mm**
w: 700mm ø
 Pumps: **Drainage, Vortex,**
Grinder.
Single or Twin Pump
 Discharge Connection:
Drainage - 1.5" BSP male with
adaptor to 40mm solvent weld
pipe
Sewage - 63mm MDPE



350L

Basement

Capacity: **350L**
 Dimensions: **h: 1150mm x**
w: 700mm ø
 Pumps: **Drainage, Vortex,**
Grinder.
Single or Twin Pump
 Discharge Connection:
Drainage - 1.5" BSP male with
adaptor to 40mm solvent weld
pipe
Sewage - 63mm MDPE



PUMP OPTIONS

Drainage – TOP range 1 ¼"

Sewage (Vortex) – VX range, ZX 1 ½" 2"

Sewage (Grinder) – Tritus range 1 ¼"

240L and 350L available as a twin pump system

For more information on the range of pumps available please contact us.



Connections



Multiple Pump Options

POWERDRAIN **BASEMENT & FINAL EFFLUENT**

Our small Packaged Pumping Stations are manufactured in high quality polyethylene for strength. Used to remove groundwater, sewage water and final effluent.

Typically installed on basements, extensions, annexes and garden offices.

The Final Effluent Stations are designed to be connected to sewage treatment plants to pump away effluent.

KEY FEATURES

- Available as single pump system
- Strong polyethylene chamber
- Designed for easy installation
- Solids handling pump options
- All pumps stations are available from stock
- Available as a Final Effluent Pumping Station

OPTIONAL EXTRAS

- Control panels/alarm packages available as optional extras.

RANGE OPTIONS



Connections

Multiple Pump Options



100L

Basement

Capacity: **100L**
 Dimensions: **h: 660mm**
w: 542mm ø
 Pumps: **Drainage.**
Single Pump
 Discharge Connection:
Drainage - 1 1/4" BSP male



200L

Basement

Capacity: **200L**
 Dimensions: **h: 1200mm**
w: 542mm ø
 Pumps: **Drainage, Vortex,**
Grinder. Single Pump
 Discharge Connection:
Drainage - 1 1/4" BSP
Sewage - 63mm MDPE



200L

Final Effluent Pump Stations

Capacity: **200L**
 Dimensions: **h: 1650mm**
w: 542mm ø
 Pumps: **Drainage.**
Single Pump
 Discharge Connection:
Drainage - 1.5" BSP male



PUMP OPTIONS

Drainage – TOP range 1 1/4"

Sewage (Vortex) – VX range, ZX 1 1/2" 2"

Sewage (Grinder) – Tritus range 1 1/4"

Single pump only

For more information on the range of pumps available please contact us.

POWERDRAIN **DOMESTIC & SMALL COMMERCIAL**

The range of domestic and small commercial packaged pumping stations are manufactured in high quality polyethylene for strength.

Chambers are available up to 2000L in capacity as standard, larger capacities are available on request.

A large range of sewage and storm water submersibles can be used, including solids handling and grinder pumps.

Stations are available on a short lead time.

KEY FEATURES

- Available as Single or Twin pump systems
- Multiple pump options
- Free-standing or guide-rail mounted options
- Strong polyethylene chamber
- Designed for easy installation

OPTIONAL EXTRAS

- Control panels/alarm packages available as optional extras.

RANGE OPTIONS



800L

Packaged Pump Stations

Capacity: **800L**
 Dimensions: **h: 1100mm**
w: 1000mm ø
 Pumps: **Vortex, Channel, Grinder.**
 Discharge Connection:
Dependent on pump



1100L

Packaged Pump Stations

Capacity: **1100L**
 Dimensions: **h: 1500mm**
w: 1100mm ø
 Pumps: **Vortex, Channel, Grinder.**
 Discharge Connection:
Dependent on pump



1400L

Packaged Pump Stations

Capacity: **1400L**
 Dimensions: **h: 1900mm**
w: 1100mm ø
 Pumps: **Vortex, Channel, Grinder.**
 Discharge Connection:
Dependent on pump



1700L

Packaged Pump Stations

Capacity: **1700L**
 Dimensions: **h: 2500mm**
w: 1100mm ø
 Pumps: **Vortex, Channel, Grinder.**
 Discharge Connection:
Dependent on pump



2000L

Packaged Pump Stations

Capacity: **2000L**
 Dimensions: **h: 2800mm**
w: 1100mm ø
 Pumps: **Vortex, Channel, Grinder.**
 Discharge Connection:
Dependent on pump



PUMP OPTIONS

Vortex – VX & VXC range – 2" / 2 ½" / 3"

Grinder – Tritus range, Grix, GT – 1 ¼", 1 ½", 2"

All available as single or twin pump systems.
 For more information on the range of pumps available please contact us.

POWERDRAIN **FLOOR STANDING / SURFACE MOUNTED**

The SAR range of strong polyethylene lifting stations are designed to be mounted above ground. Available with drainage, solids handling vortex and grinder pumps for chopping.



40L

Packaged Pump Stations

Capacity:

40L

Dimensions:

h: 410mm w: 448mm

d: 310mm

Pumps:

**Drainage, Vortex, Grinder.
Single Pump**

Discharge Connection:

Dependent on pump



100L

Packaged Pump Stations

Capacity:

100L

Dimensions:

h: 645mm w: 690mm

d: 500mm

Pumps:

**Drainage, Vortex, Grinder.
Single Pump**

Discharge Connection:

Dependent on pump



250L

Packaged Pump Stations

Capacity

250L

Dimensions:

h: 884mm w: 902mm

d: 726mm

Pumps:

**Drainage, Vortex, Grinder.
Single Pump**

Discharge Connection:

Dependent on pump



550L

Packaged Pump Stations

Capacity:

550L

Dimensions:

h: 884mm w: 1476mm

d: 902mm

Pumps:

**Drainage, Vortex.
Twin Pump**

Discharge Connection:

Dependent on pump

POWERDRAIN **WELFARE CABIN PUMP STATIONS**

The surface-mounted sewage pumping station is designed with a very low inlet level, making it perfect for welfare cabins.

It comes with the option of a solids-handling vortex or grinder for efficiently chopping and pumping over long distances.

The system offers a straightforward plug-and-play installation. It also includes a control panel, with an optional telemetry feature for remote control and monitoring.

KEY FEATURES

- Multiple pump options
- Low inlet level
- 240L chamber

SPECIFICATION

- Connection: **63mm MDPE**
- Dimensions: **h: 680mm**
w: 740mm d: 960mm



PUMP OPTIONS

Vortex – VX range,

Grinder – Tritus Inox



All our systems are available with a range of pumps. If you are unsure on the correct pump for your application please speak to a member of our team.

We have a large number of additional pump options available from our extensive range including options for free-standing and guide-rail installation. Please enquire for more information.

Pump Type	Pump Option	Power			Max Flow Rate (l/min)	Max Head (m)
		kW	HP	A		
Drainage	TOP 2	0.37	0.5	2.0	220	8
Sewage Vortex	ZXm1A/40	0.60	0.85	4.5	400	10.5
	VXm8/50	0.55	0.75	4.3	450	6
	VXm10/50	0.75	1.0	5.5	550	8.5
	VXm15/50	1.1	1.5	7.0	650	11
	VXm20/50	1.5	2.0	9.6	750	13
	VXm8/50-ST	0.55	0.75	4.3	450	6
	VXm10/50-ST	0.75	1.0	5.5	550	8.5
	VXm10/50-ST	1.1	1.5	7.0	650	11
	VXm15/50-ST	1.5	2.0	9.6	750	13
	VXCm15/50F	1.1	1.5	8.5	600	11
	VXCm20/50F	1.5	2.0	9.0	700	12.5
	VXCm30/50F	2.2	3.0	12.0	850	15.5
Sewage Grinder	Tritus TRm1.3	1.3	1.75	9.0	220	20
	Tritus TRm2 2AP	2.2	3.0	14.0	275	35
	Grix 32-2/090MG	0.9	1.2	5.0	200	17

*ST - Stainless steel.



PRODUCT SPECIFICATION GUIDE

To enable us to assist you in the correct selection of a Powerdrain system have this information available when speaking to a member of our sales team.

1. Depth from ground level to inlet invert

2. Difference between inlet level and discharge into outfall chamber (If any point of rising main is higher than the discharge into the outfall chamber, please state the difference in levels)

3. Total distance from pump chamber to outfall chamber

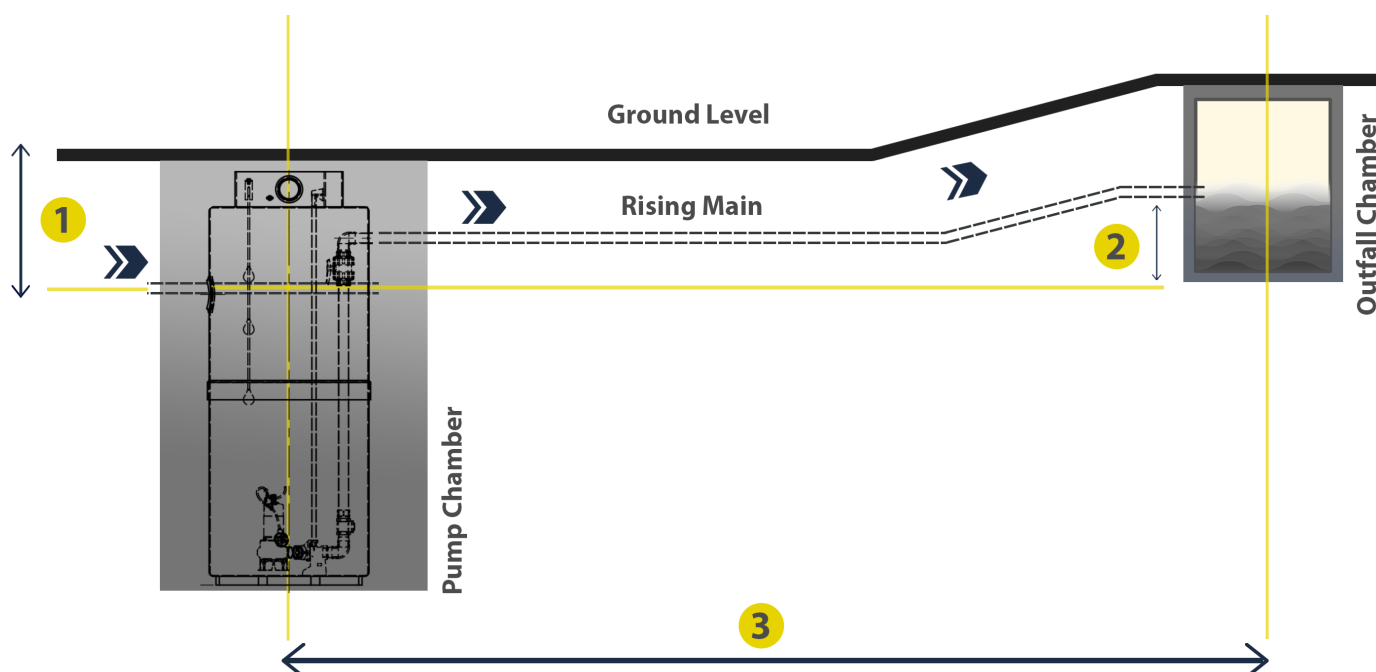
4. Rising main internal diameter

5. Rising main material

6. Fluid to be pumped

7. Pumping capacity required (or number / type of property / max. number of occupants)

8. Electrical power supply available - 230V/1-Ph or 400V/3-Ph



Pedrollo Distribution Ltd
Crossfield Fort
Crossfield Road Industrial Estate
Lichfield
WS13 6RJ

t: 01543 415200
e: sales@pedrollo.co.uk
w: pedrolldistribution.co.uk

powerdrain.co.uk